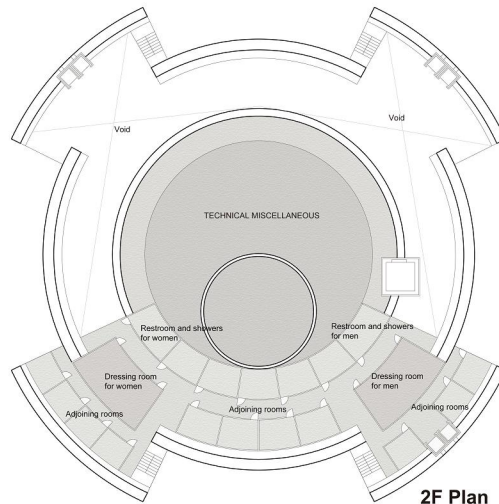
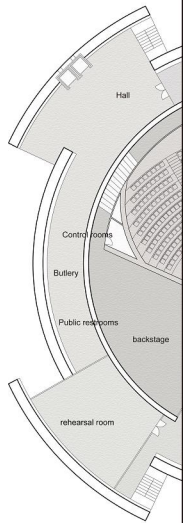


B1F Plan S=1:250



2F Plan



Site Plan S=1:500



The House of Arts and Culture

House

The House expresses the stoutness of Lebanese race's mind and the desire to peace, and is the landmark of the revival that strongly attracts people.

A Story of Flowering Spirit

As the door entrance of the east of the Mediterranean sea, Lebanon prospers as a center of the Mediterranean sea trade in the background of a rich country and a mild weather, and has passed on the culture and the art to the world from of old.

Architectural rush by premeditated development continues in the capital Beirut city, and it is near on the day when "Paris in the Middle East" regains the glory at old times though the town was destroyed by the civil war lasting for 15 years from 1975.

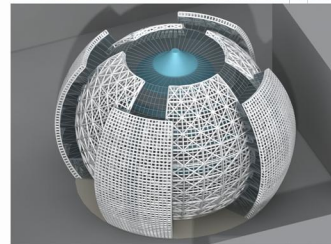
It is said that it keeps succeeding to afferent as the champion of the east and west trade of the Mediterranean sea trade, Asia, and Europe during the civil war, and the activity of the art and the culture was continued without usually of dividing.

The House was planned as a place where the art and the culture that people had succeeded to in domestic and foreign various places were brushed up further and as a free space to express the art in there was no borderline in the function space of the theater, the screening place, and the conference place (exclusive use), etc. the play, the dance, the performance, the art, the video, the movie, the lecture, and the publication are issued. In public space in the exhibition space and the workshop space, etc., a variegated activity like the construction of the spread activity of the art and the culture by the citizens who receive stimulation from the artist and them, networks, and partnerships etc. is done.

Uniting the tradition and the modern and uniting the east and west civilization are themes of a Lebanese art. The House should strengthen the role of Beirut in an international art scene, and project the art and the culture as international space that more actively and has creativity.

We image the port where ships of the Phoenician who expanded the Latin sale in which the bright Mediterranean sea is navigated by fully loading the trade goods such as the olive oil and fig trees gather. And, the art of the present age in Lebanon and the Middle East region is sent from this port to the world.

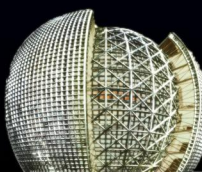
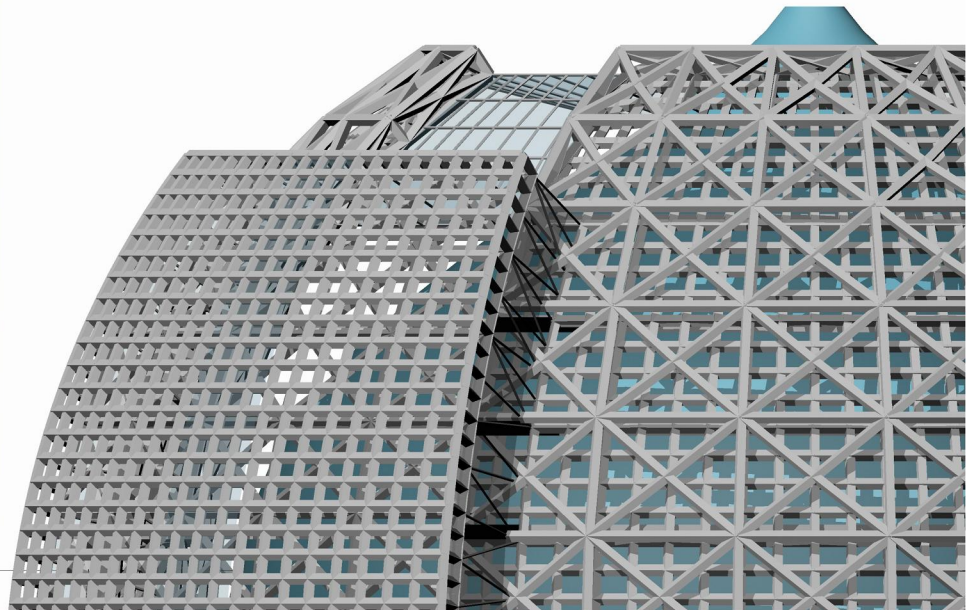
Spaces	AREAS PROGRAMME
A. Reception, Information	120
B. Performance and Conference hall	2,409
C. Exhibition Spaces	972
D. Work and Training rooms	1,402
E. Documentation Centre	1,135
F. Cinematheque	273
G. Cafeteria and commercial spaces	161
H. Administration	900
I. Miscellaneous Spaces	1,200
J. Technical rooms	500
K. Parking and delivery	7,600
Horizontal and vertical circulation	580

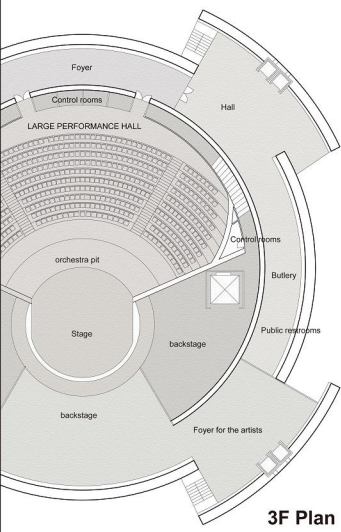


The House is arranged at the center of the site, and accepts people who visit from all directions. It is aimed to continue organically a function and a common space, and to become a part of network in the town for "Artistic culture and production, exchange, and those interactions". Expansion of the social communication and the culture, and "creativity promotion of the art and the culture". The lobby at a grand level is a space that people who have gathered in each purpose share, and it is connected with the function of the above floor by the approach of an atrium that holds the exhibition spaces concurrently.

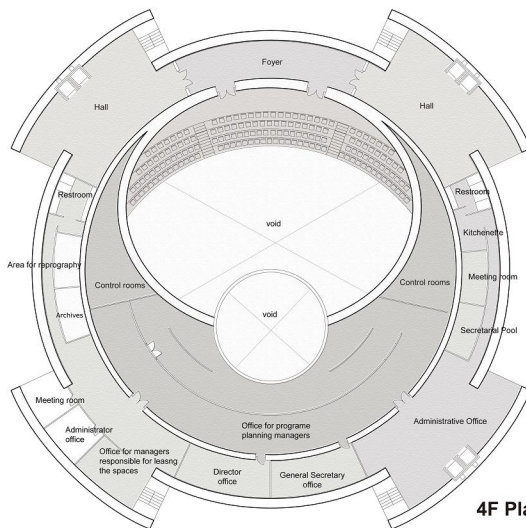
The composition on the ratio in the entire building is based on the combination of concentric circles. It is composed like weaving and lifting the theater of the main that symbolizes the art and the culture of Lebanon, and it raises, it polishes, and the function and the space to raise. It composes the structure. A structural system becomes independent by the curve on the plane by each wall where the insulation is secured together with a structural rigidity, and is support as for the theater of the main.

The glass wall of space of shell and the skylight of the sun optical panel lower of the roof is supported with the frame and the arch of steel.

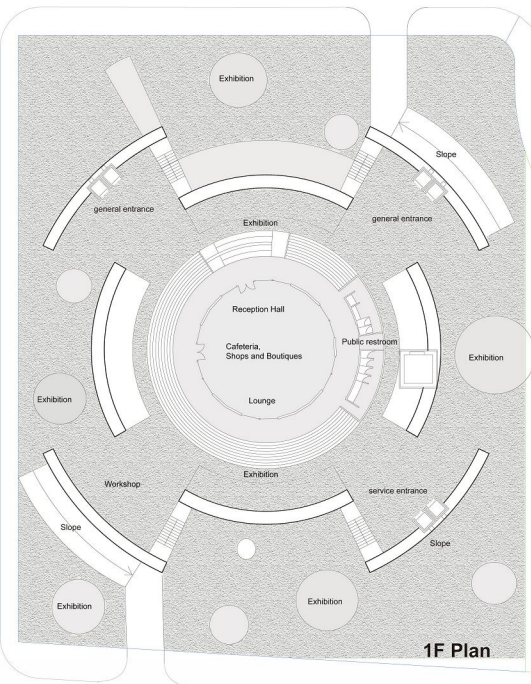
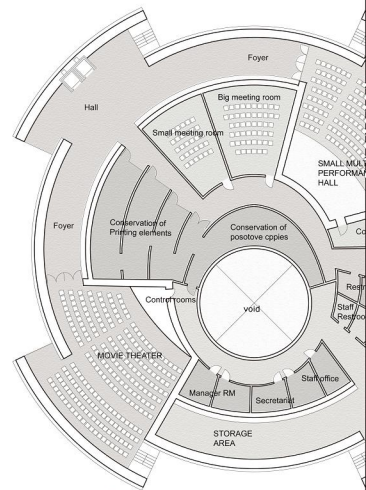




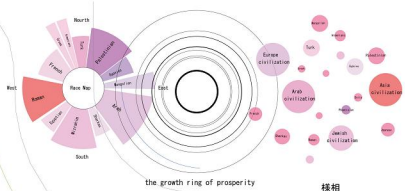
3F Plan



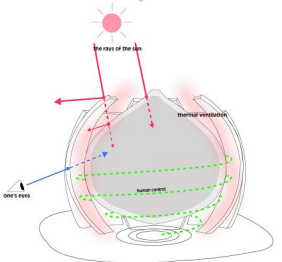
4F Plan



1F Plan



the growth ring of prosperity 樓相



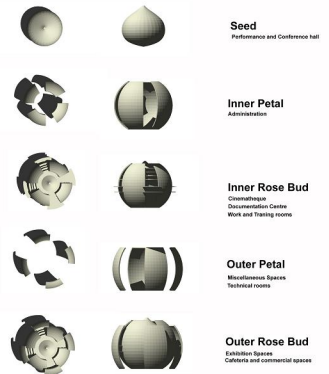
The volume in perception of the House is influenced immediately by the light of nature. The glass and the skylight between the adjoined shells continuously respond to the pattern of light and the shadow that changes with running on of the sun. The glass and the skylight between the adjoined shells continuously respond to the pattern of light and the shadow that changes with running on of the sun. Light shoots at the surface in the shell while variously carving the shadow according to the weather and time and it crowds at the season. As a result, the distinctive atmosphere is brought to a common space of an atrium placed between the theater and the shell becoming a display space.

Carvings and sculptures form will appear greatly to an internal space, and invent various spaces in the design process. The House includes a space that the blow-by and a small space and light pour in abundance and a solemn quiet space, etc. and the town from the window of a space near the balcony and the outside wall to Beirut can be wanted. The wall of the phase that is passed and seen invents a visual, upper and lower connection from the inside in the slit of the glass.

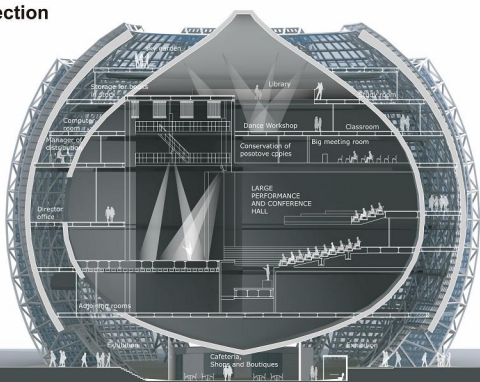
In free breath with the outside, the activity from which the civil war age has been stubbornly kept to faces new development.

The appearance will become a symbol that doesn't limit the development of an individual activity to the symbol, symbolizes a new appearance of this country, and is loved. We call the house of arts & culture "the House" that overflowed in the touch of the sun.

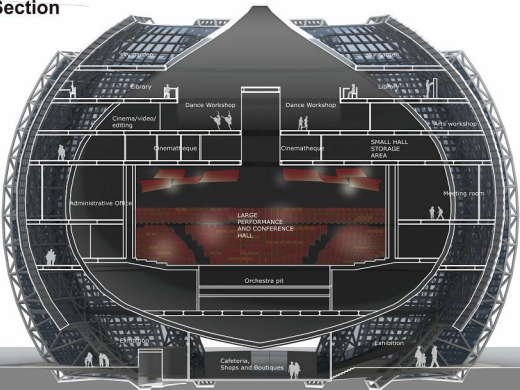
The form and the landscape in the building derived to add a new feature only of here to this site in the city environment are to recall the impression of the art and culture in the world.



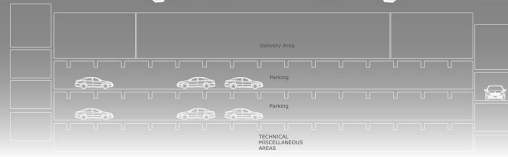
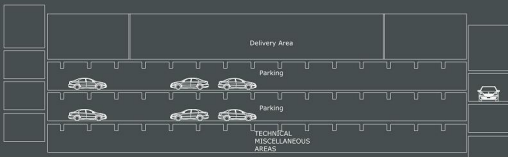
AA Section

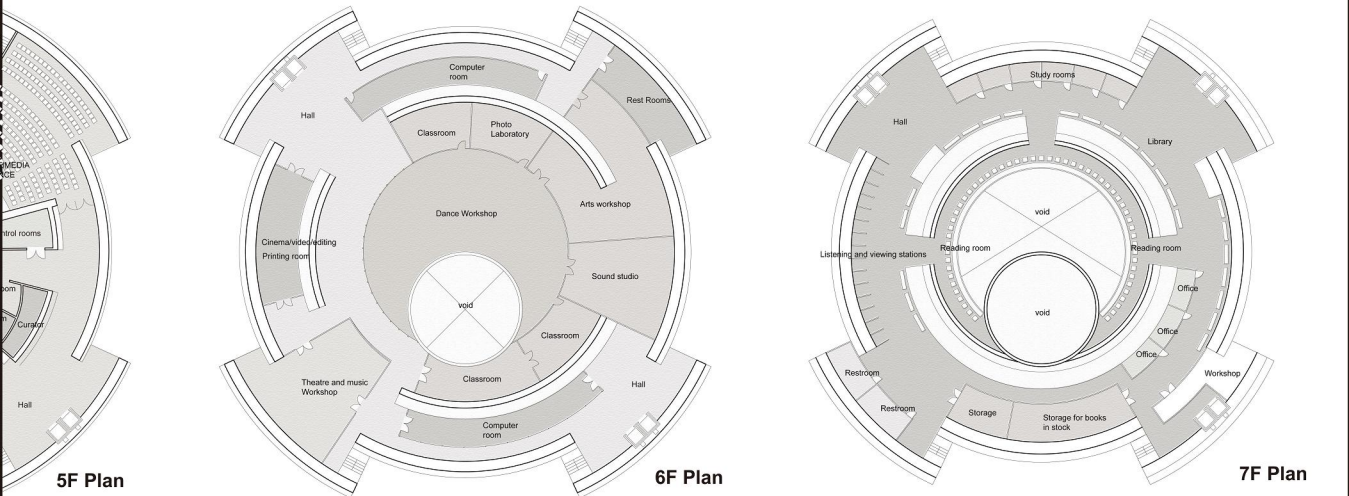


BB Section



North &





5F Plan

6F Plan

7F Plan

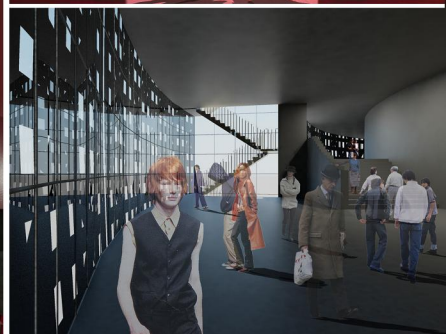
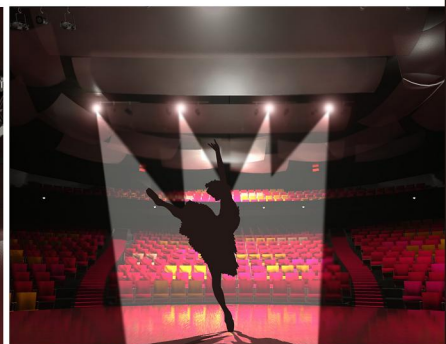
The HOUSE OF ARTS & CULTURE in BEIRUT

The House is a space of communications for people in Lebanon where the art and the culture are parts of life, and physical places indispensable for life. The body of a soft person and the space that catches flow and perceived information space like the city of hard-edge exist at the same time here.

To cover and over again dismantled the demanded building scale though we defended one form. To secure a free space without the border line that is a strong demand element, we derived the composition with the nucleus and the hall on the inside that filled homogeneous light, and produced the quality of the space more than the indoor space.

The form overlapped with the structure of the art and the culture of Lebanon since at continuousness and the comparison with the ambient surrounding. It is built in so that a variety of function spaces of the art expression may float on the nucleus and the hall like Foley in the city, and people wander in that. It is architectural, and it perceived phenomenon though it is a city, and it is visual substance. It is a place of construction, uniting functions of the city, and the exchange.

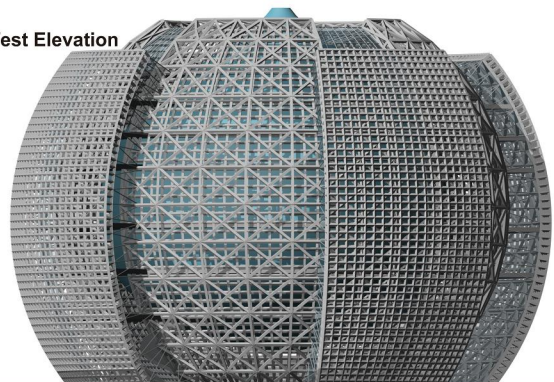
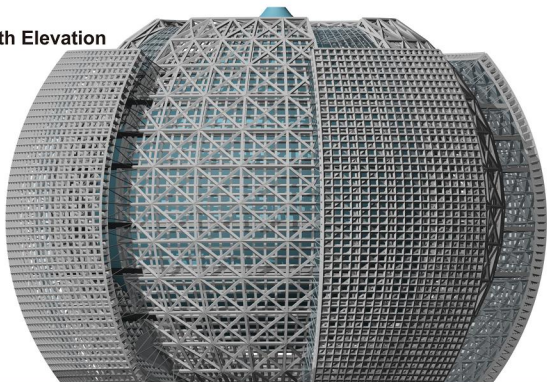
A lot of holes grab, touch the facade evenly by each one of the hole each other, and become the structures of construction. Each of art activities with individuality becomes a film breathed with the outside repeating absorption and the exhaust like the infiltration film, and the aspect and the air of an internal performance are drifted.



Large Performance Hall

South Elevation

West Elevation



City and Architecture

The House is planned as the nucleus of the redevelopment of the Ghailghoul district. The site is opposite to the redevelopment project of Beirut of the east, the north, and the west side, and connected directly with various places by the ring loading in the south. The volume and the tower of a large scale built, and in the district of the redevelopment project that queued up, our approach analyzed the contact and the demand program in a site and an existing building at the same time, and searched for the possibility of forming a new environment.

The axis with a strong advanced development toward the south north is repeated to the street and the building in the surrounding, and emphasized. However, people are freely crossed the space compelled to this strong axis as well as the town that the history has built up and flow. The place that stays more comfortably and swirls are sure to be requested.

