

NORWAY NATIONAL MUSEUM at Vestbanen

Prism — Du fins, fordi du holder hva lyset lover. (Jan Erik Vold)

The area from Radhusplassen to Aker Brygge, 100 kilometers from the open sea at the back of a fjord in recess, is a place of recreation and relaxation for Oslo people. The planning site Vestbanen, is located on the west edge of Radhusplassen, and is the junction point to the development of the west side of Oslo.

To this area where various contexts of an existing city intersect, we propose to facilitate a dynamic, fruitful conversation of the environment (spatial form, public space, sustainable growth, and appropriate usage and scale) through "Prism". As the light of Norway penetrates, refract through and reflect at a "Prism", through the museum, people come and go around between the past and the future, inside and outside of Norway, daily life and the art world.

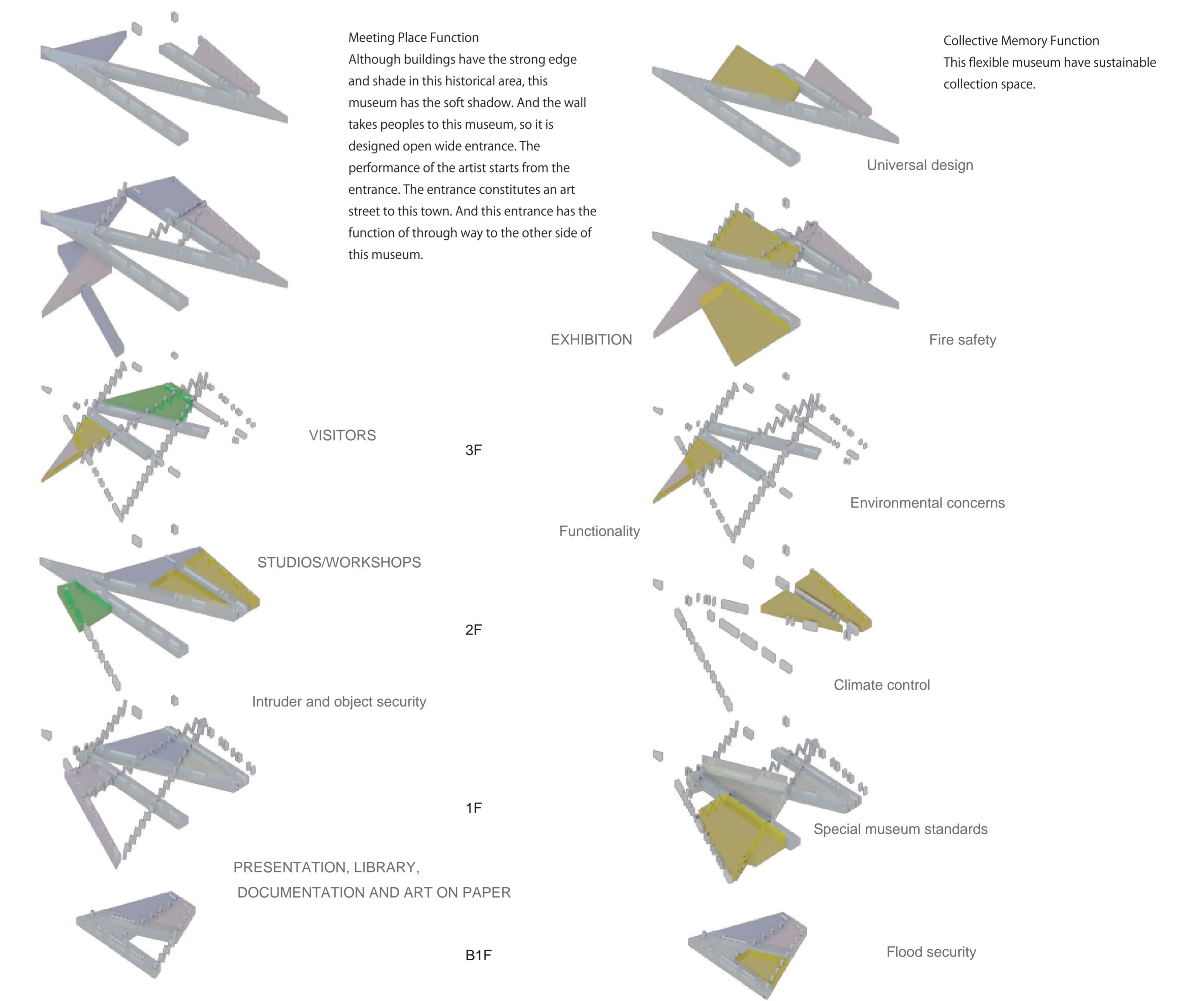
Conversation with city
Our first proposal is a big, street type public space that strongly characterizes the conversation with a peripheral architectural scale. This system gives the building the human scale, and integrates the existing building blocks with the museum and the office.

The second proposal is a site planning. The building arrangement presents considerable importance in our project. Considering the adjacency with surrounding building blocks and Radhusplassen including the old train station, and to ensure the continuity of the viewpoint and the richness of the sight of the city while satisfying the required functions, the floor of the museum was designed to cover the entire area. To offer the best view toward the sea, the fjord, and Akershus Slott, the office space is planned in the upper part of the northwest. The new building shows its awareness of facing both the town and fjord.

The third proposal aims to create the public space and the first floor with easy access to attract the flow of visitors from all directions in the city including the main plaza. The conversation of soft relations of various rooms in the museum and the Nobel Peace Center (old Oslo west station) creates a new place of relaxation to people.

The fourth proposal is to let light, air, and space flow freely by connecting the floors of different uses through the linear transfer space, to combine the inside of the museum and surrounding street dynamically, and to form a spectacular internal space. At the same time it ties each city block in north, south, east, and west without dividing the town into parts.

The fifth proposal is to aim at sustaining communication between nature and the city. The museum architecture reflects the sun light in daytime. At night it radiates light as the reflection of the activities and the events within the museum and changes the complex. The National Museum faces the Oslo City Hall which is looking towards the Oslo fjord and creates radiance as a new symbol of people and culture in Norway.



Architectural plan

We consider the building of the museum as the combination of three elements, "Platform", "Server", and "Jewelry box".

"Platform"

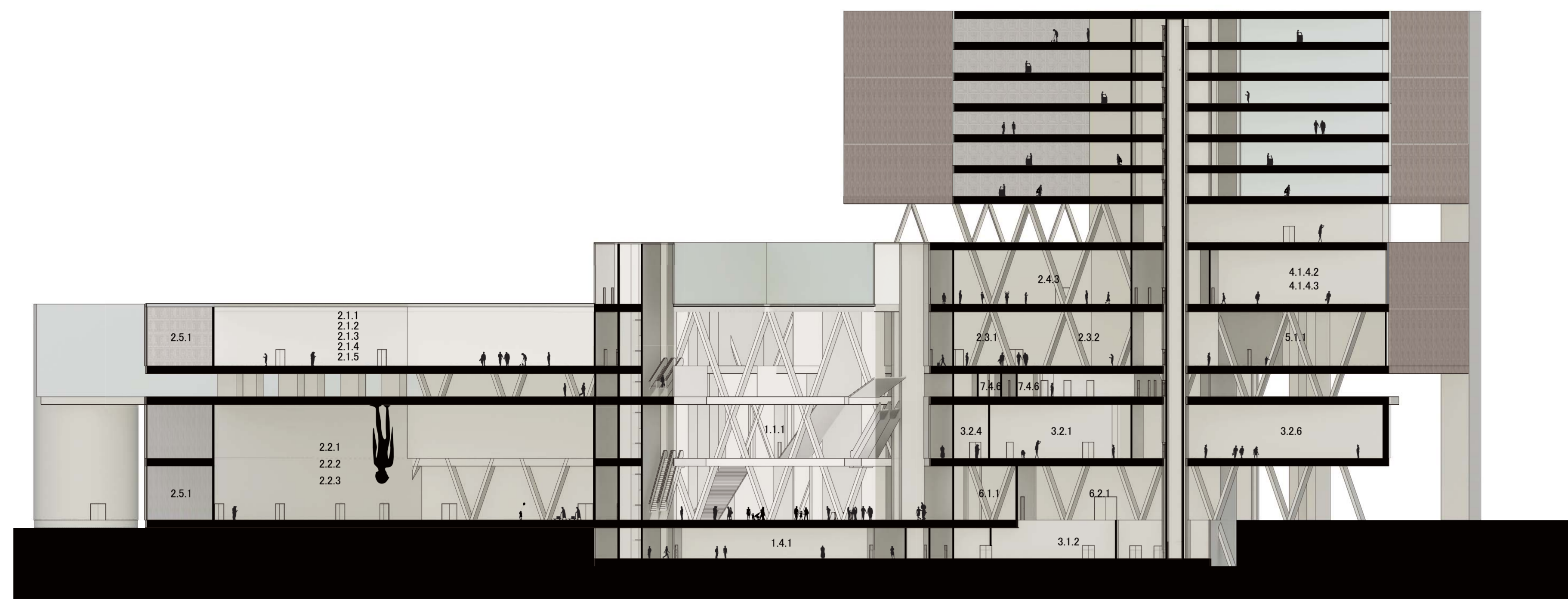
The planned site, Vestbanen, is located on the west edge of Radhusplassen. In old days it was the Oslo West station which had been the gateway of Oslo for people who arrived in and departed from Oslo through overland traffic. This place is "Platform" where people meet each other over time and space.

"Server"

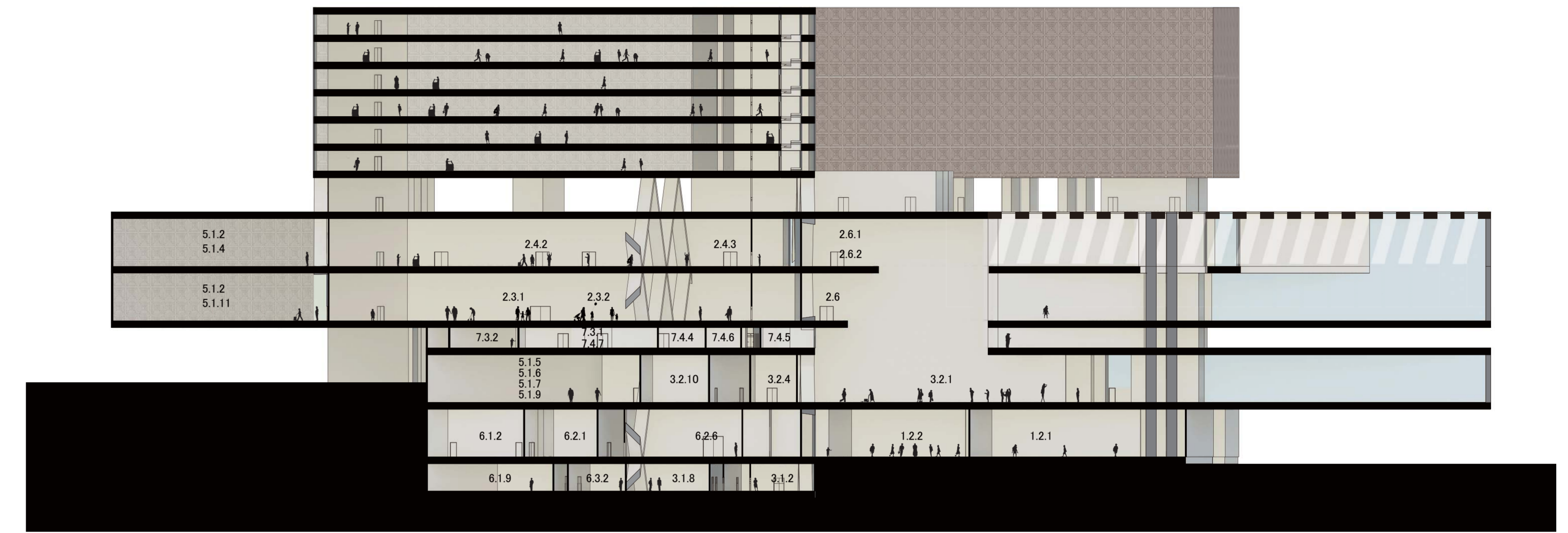
Each function of the building can be portrayed as a "Server" which, receiving requests provides services by keeping functionality and flexible relationship.

"Jewelry box"

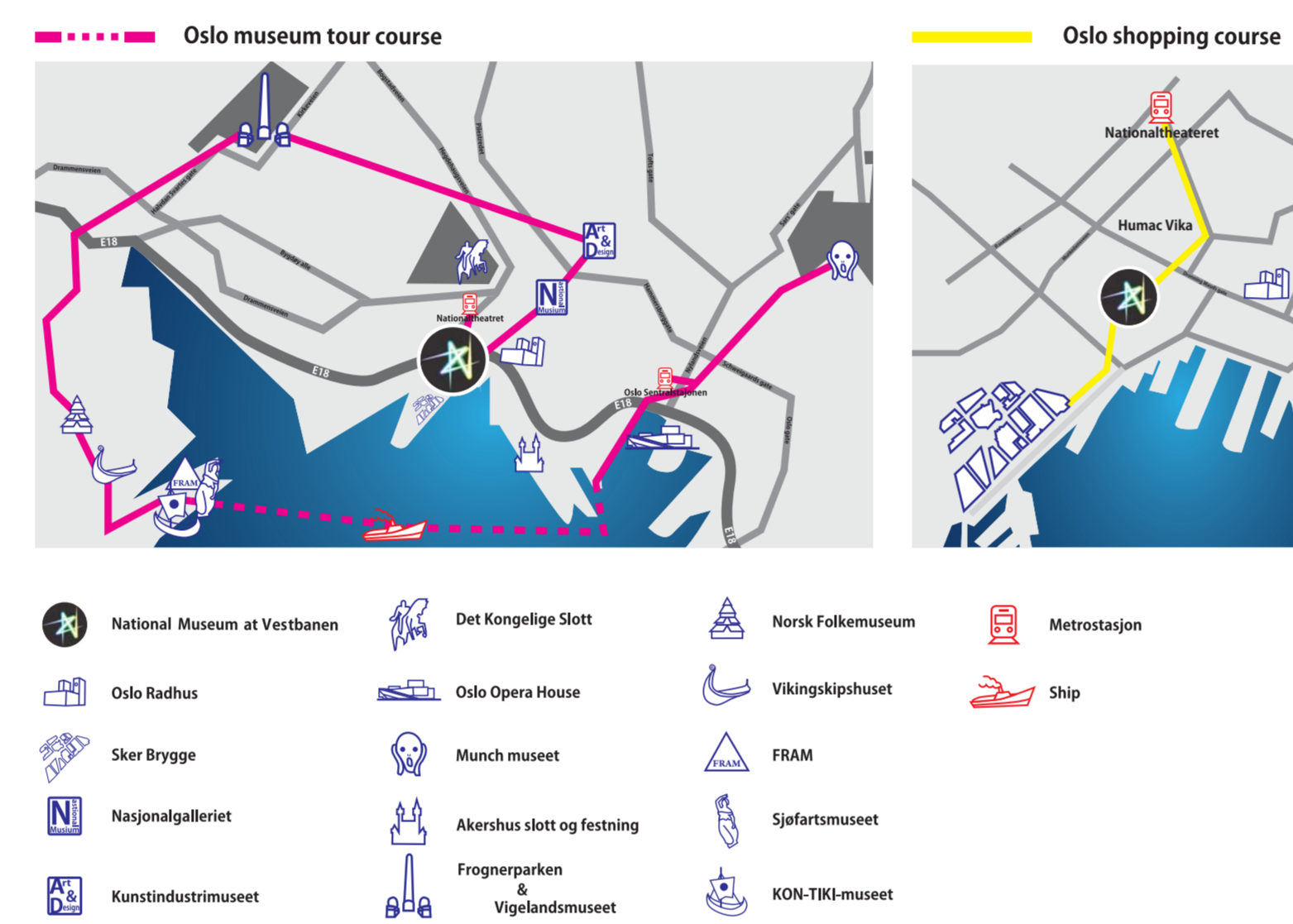
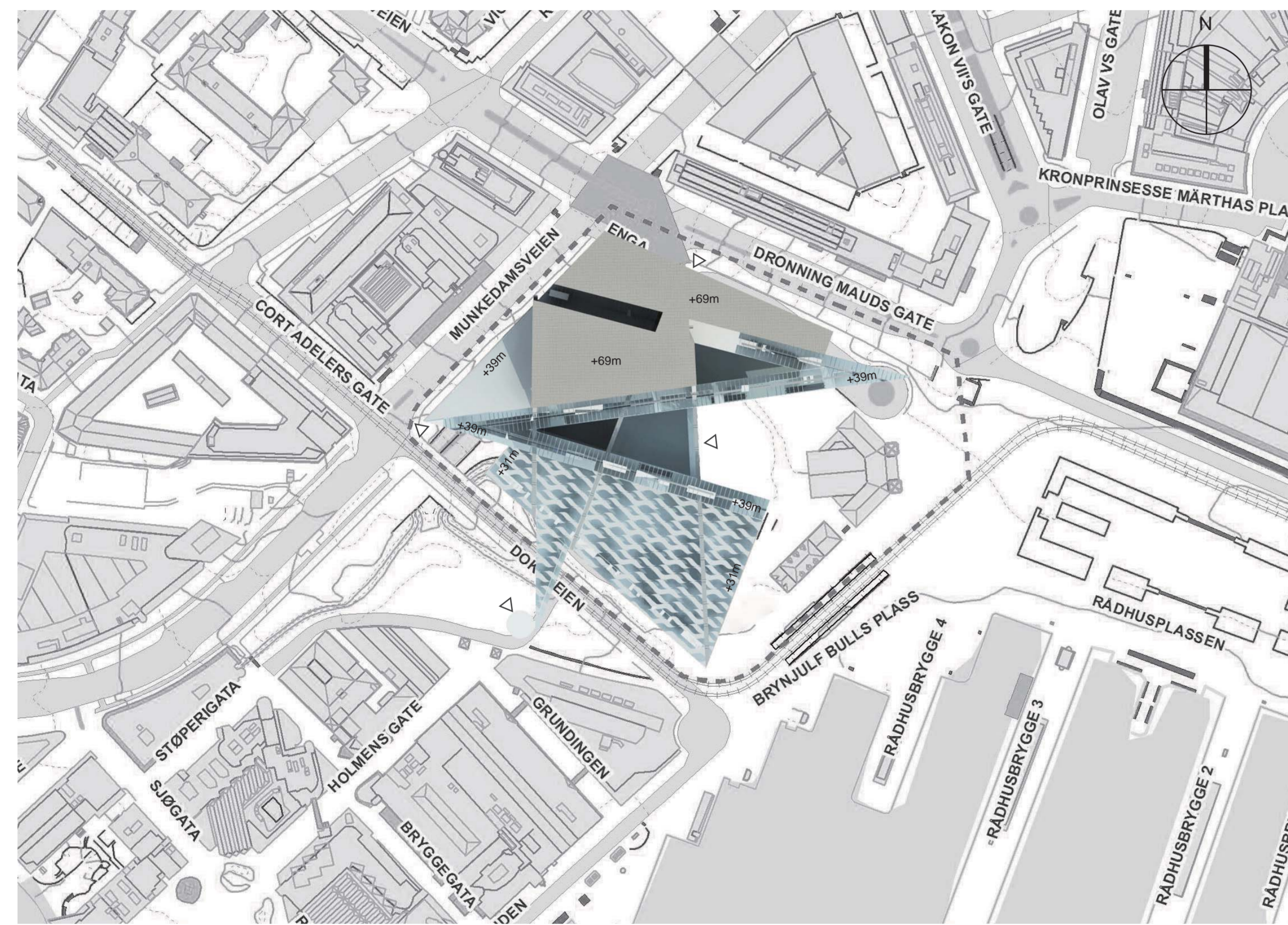
National Gallery should have an excellent formative design as well as an architectural quality. The idea of publicity, which interconnects individual spaces containing artistic work, produces excellence of the form design and clear shape and meaning to the cityscape as a "jewelry box".



A-A Section 1/500



B-B Section 1/500



Area Breakdown

No.	Room category	Total net floor space
1	VISITORS	3070
1.1	Lobby space	317
1.2	Museum shop	412
1.3	Cafe	741
1.4	Multi-function hall	539
1.5	Media hall	353
1.6	Meeting rooms	107
2	EXHIBITION	11118
2.1	Older art	3538
2.2	Design, arts and crafts	3156
2.3	Contemporary art	2214
2.4	Temporary exhibitions	2181
2.5	Storage	91
2.6	Visitor functions	1394
3	PRESCRIPTION, LIBRARY, DOCUMENTATION	2808
3.1	Preservation	163
3.2	Library, documentation, and paper	2040
3.3	Openwork	45
4	STUDIOS/WORKSHOPS	3773
4.1	Preservation art on paper	1081
4.2	Photography department	100
4.3	Exhibition technique workshop	540
4.4	Other staff rooms	35
5	STORAGE ROOMS	7802
5.1	Storage rooms	7376
5.2	Associated rooms	426
6	RECEPTION AND DISPATCHMENT	1331
6.1	Reception/dispatchment - art	776
6.2	Reception/dispatchment - operation	386
6.3	Maintenance	206
6.4	Staff work operations	63
7	ADMINISTRATION	3688
7.1	Office area	1290
7.2	Finance	31
7.3	Car park	154
7.4	Staff facilities	1208

Choice of Materials

The museum is composed chiefly of three materials, stone, wood, and glass. We aimed at environmentally friendly construction by using plenty of natural material and natural energy.

Stone:

For the floor material of the public passages, in order to maintain continuity with peripheral streets, stones which is strong and lasts long and tile burnt by soil of this place are used.

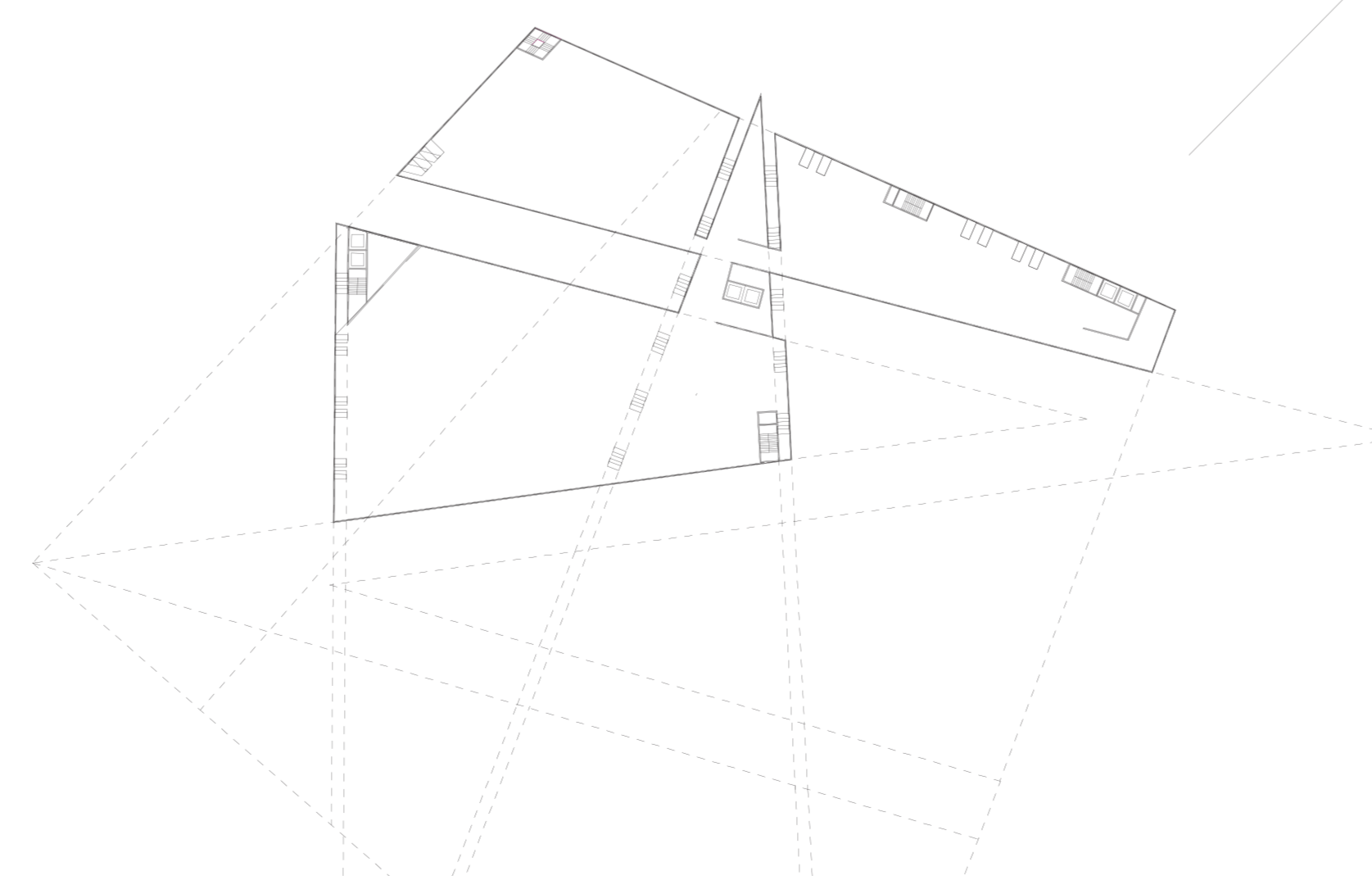
Wood:

For the part that composes external walls of the building, wood is used to give countenance to the building by the technique of woodwork.

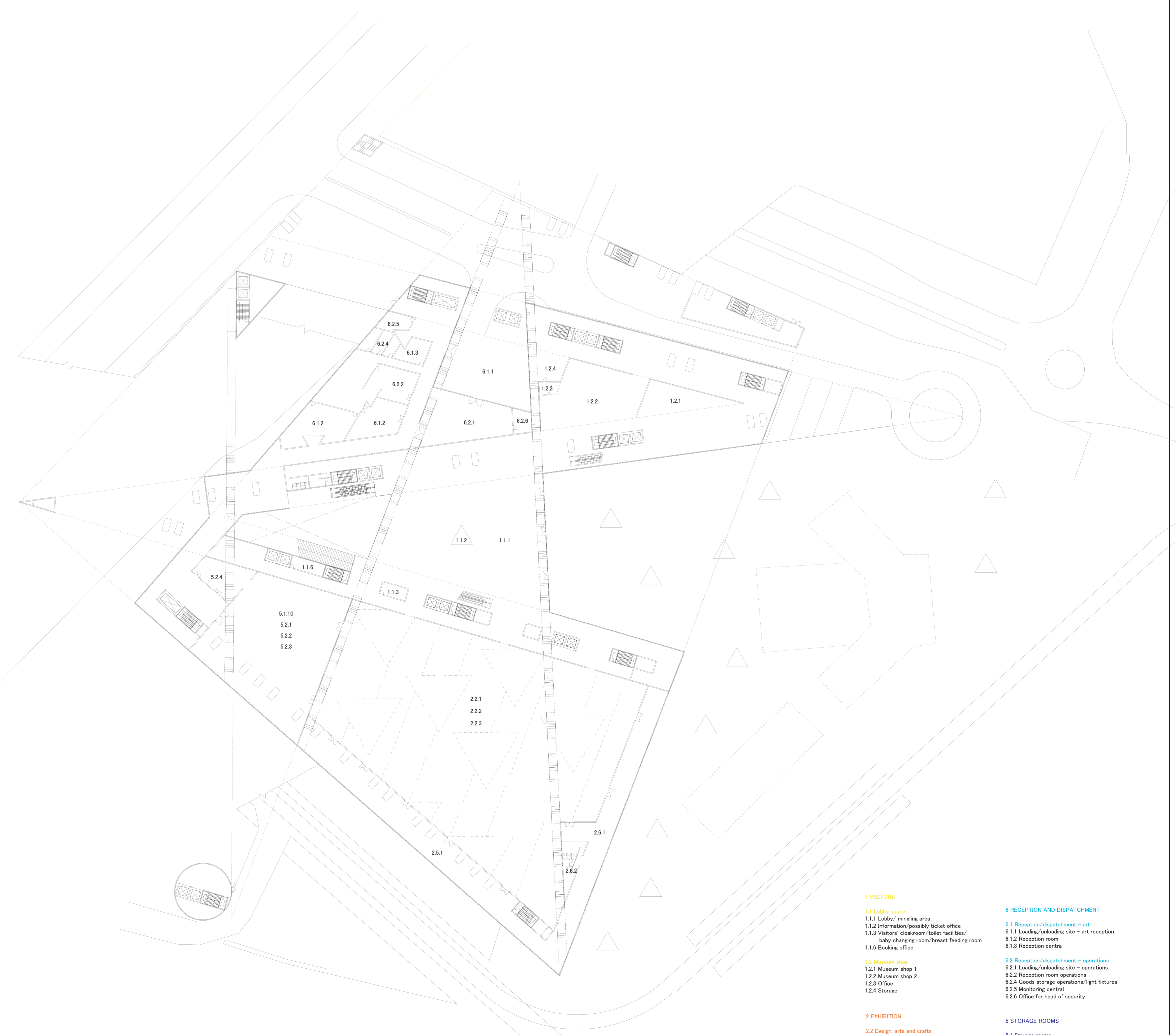
Light and the wind are penetrated so that the tree may breathe, and the outside and the inside are connected softly.

Glass:

The wall of the glass rules how the building is seen from all sides, and bears the key role. Through the glass wall the light in Northern Europe penetrates, refracts, and reflects, giving the construction brightness.

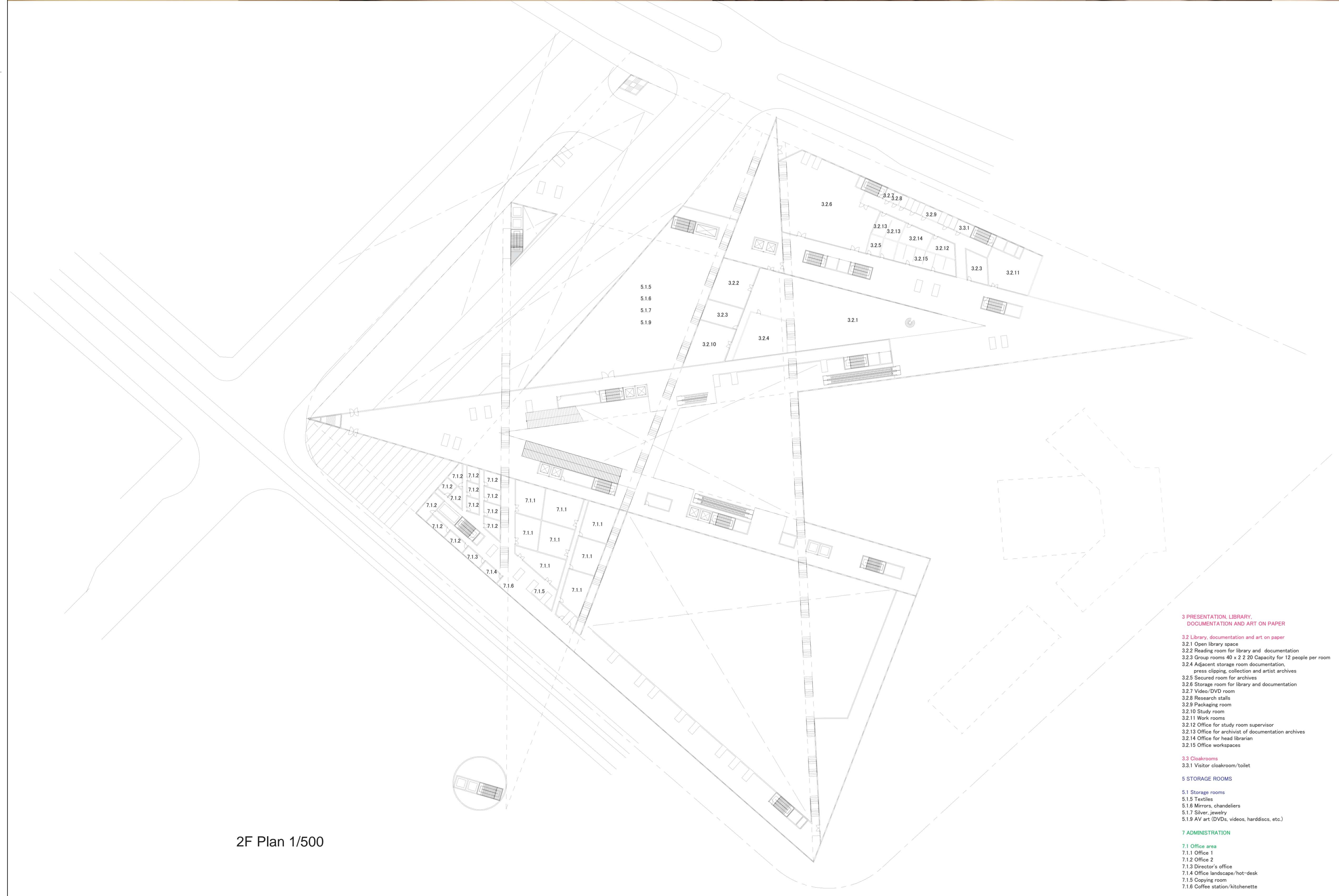
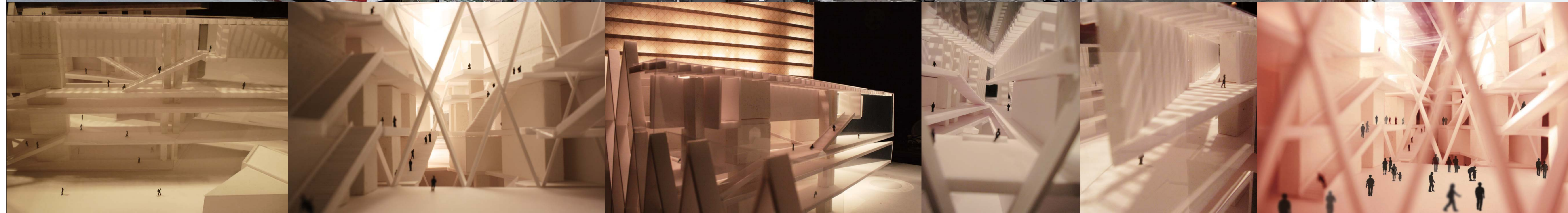
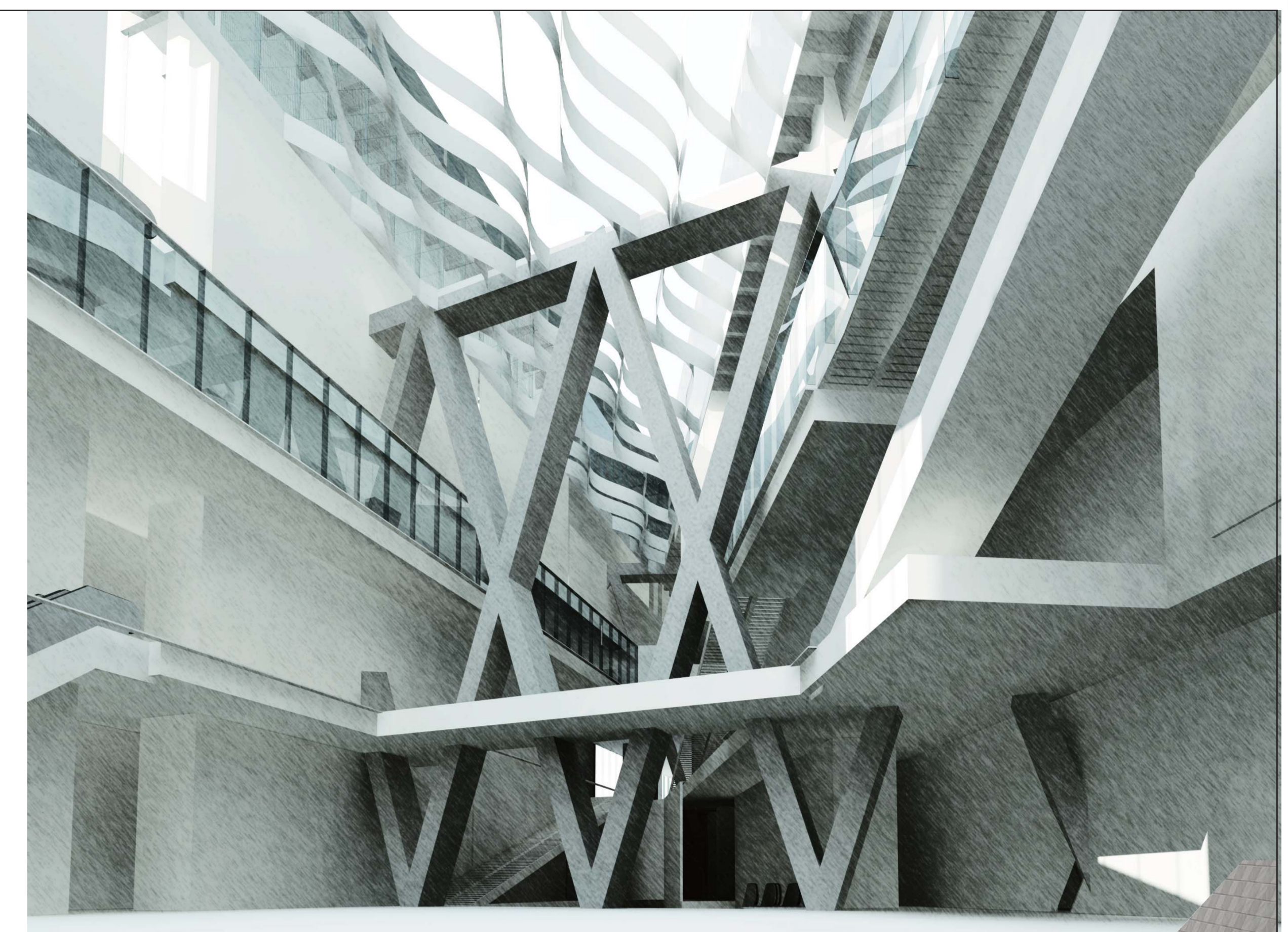


Floor Plans for possible Government Offices 1/1000

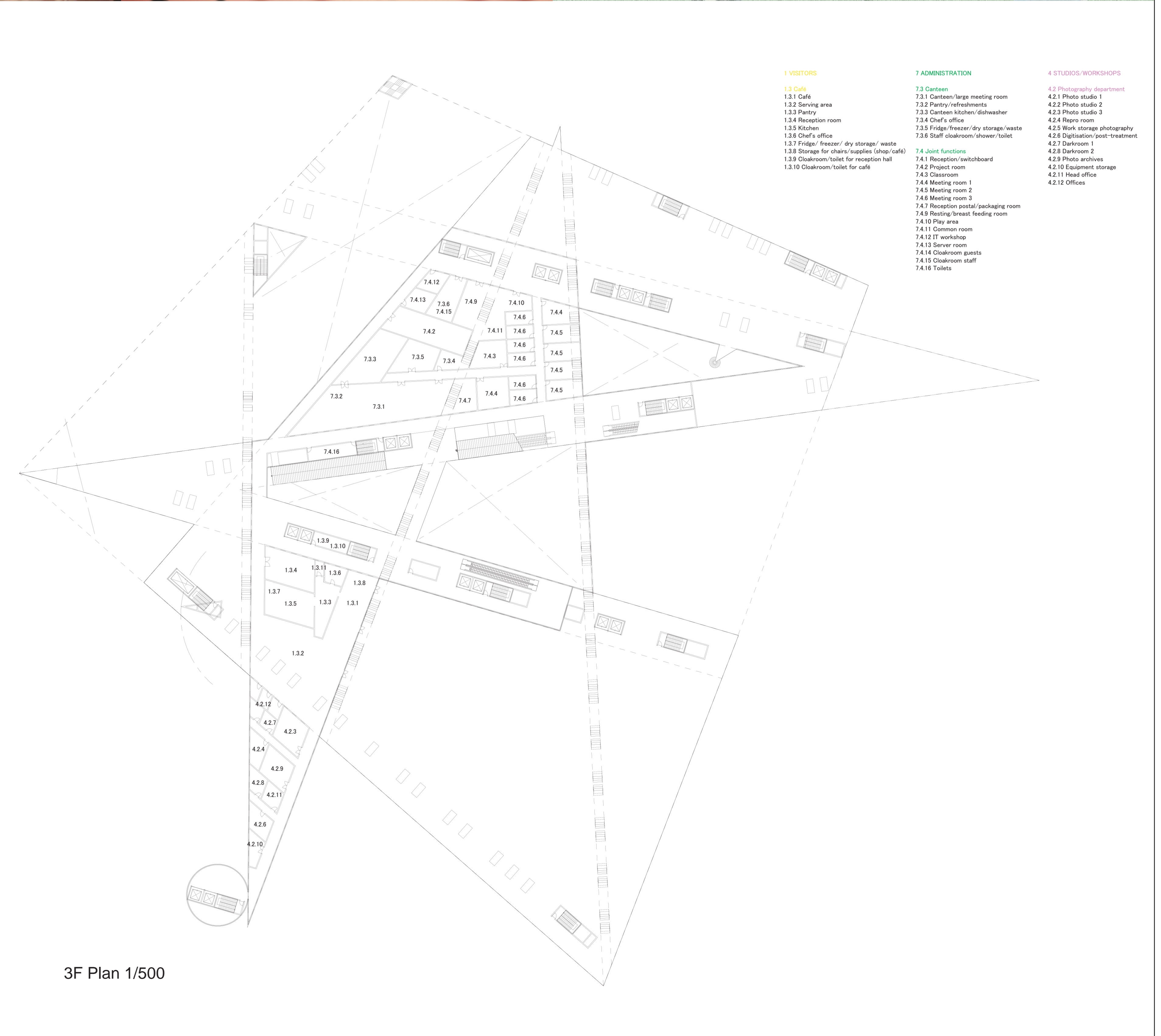


1F Plan 1/500

1 VISITORS	6 RECEPTION AND DISPATCHMENT
1.1 Lobby space	6.1 Reception/dispatchment - art
1.2 Museum shop	6.1.1 Loading/unloading site - art reception
1.3 Cafe	6.1.2 Reception room
1.4 Multi-function hall	6.1.3 Reception centre
1.5 Media hall	6.2 Reception/dispatchment - operations
1.6 Meeting rooms	6.2.1 Loading/unloading site - operations
2 EXHIBITION	6.2.2 Reception room operations
2.1 Older art	6.2.4 Goods storage operations/light futures
2.2 Design, arts and crafts	6.2.5 Monitoring central
2.3 Contemporary art	6.2.6 Office for head of security
2.4 Temporary exhibitions	5 STORAGE ROOMS
2.5 Storage	5.1 Storage rooms
2.6 Visitor functions	5.1.10 Art on paper (graphics, drawings, posters)
3 PRESCRIPTION, LIBRARY, DOCUMENTATION	5.2 Associated rooms
3.1 Preservation	5.2.1 Storage rooms for external users/next exhibits
3.2 Library, documentation, and paper	5.2.2 Rooms for technical devices, tools, etc.
3.3 Openwork	5.2.3 Rooms for spare parts for installations
4 STUDIOS/WORKSHOPS	5.2.4 Clubroom with toilets
4.1 Preservation art on paper	
4.2 Photography department	
4.3 Exhibition technique workshop	
4.4 Other staff rooms	
5 STORAGE ROOMS	
5.1 Storage rooms	
5.2 Associated rooms	
5.1.10 Art on paper (graphics, drawings, posters)	
5.2 Associated rooms	
5.2.1 Storage rooms for external users/next exhibits	
5.2.2 Rooms for technical devices, tools, etc.	
5.2.3 Rooms for spare parts for installations	
5.2.4 Clubroom with toilets	



2F Plan 1/500



3F Plan 1/500

- 9 PRESENTATION, LIBRARY, DOCUMENTATION AND ART ON PAPER**
- 32.1 Open library space
 - 32.2 Reading room for library and documentation
 - 32.3 Storage rooms 40 x 2 x 20 Capacity for 12 people per room
 - 32.4 Adjacent storage room documentation, press clipping, collection and artist archives
 - 32.5 Secured room for archives
 - 32.6 Storage room for library and documentation
 - 32.7 Video/DVD room
 - 32.8 Research table
 - 32.9 Packaging room
 - 32.10 Study room
 - 32.11 Work rooms
 - 32.12 Office for study room supervisor
 - 32.13 Office for archivist of documentation archives
 - 32.14 Office for head librarian
 - 32.15 Office workspaces
- 33 Classrooms**
- 33.1 Visitor classroom/toilet
- 5 STORAGE ROOMS**
- 5.1 Storage rooms
 - 5.15 Textiles
 - 5.16 Mirrors, chandeliers
 - 5.17 Silver, jewelry
 - 5.18 Art (DVDs, videos, hardfiles, etc.)
- 7 ADMINISTRATION**
- 7.1 Office area
 - 7.1.1 Office 1
 - 7.1.2 Office 2
 - 7.1.3 Director's office
 - 7.1.4 Office landscape hot-desk
 - 7.1.5 Copying room
 - 7.1.6 Coffee station/Michaelmas

- 1 VISITORS**
- 1.1 Cafe
 - 1.3.1 Cafe
 - 1.3.2 Serving area
 - 1.3.3 Pantry
 - 1.3.4 Reception room
 - 1.3.5 Kitchen
 - 1.3.6 Chef's office
 - 1.3.7 Fridge/ freezer/ dry storage/ waste
 - 1.3.8 Storage for chairs (outside (shop table))
 - 1.3.9 Classroom toilet for reception hall
 - 1.3.10 Classroom toilet for cafe
- 7 ADMINISTRATION**
- 7.2 Corridor
 - 7.3.1 Corridor large meeting room
 - 7.3.2 Party refreshments
 - 7.3.3 Corridor kitchen/dishwasher
 - 7.3.4 Chef's office
 - 7.3.5 Fridge/ freezer/ dry storage/ waste
 - 7.3.6 Staff classroom shower/toilet
- 4 STUDIOS/WORKSHOPS**
- 4.1 Photography department
 - 4.2.1 Photo studio 1
 - 4.2.2 Photo studio 2
 - 4.2.3 Photo studio 3
 - 4.2.4 Repair room
 - 4.2.5 Work storage photography
 - 4.2.6 Digitization/scan treatment
 - 4.2.7 Darkroom 1
 - 4.2.8 Darkroom 2
 - 4.2.9 Photo archives
 - 4.2.10 Equipment storage
 - 4.2.11 Head office
 - 4.2.12 Offices

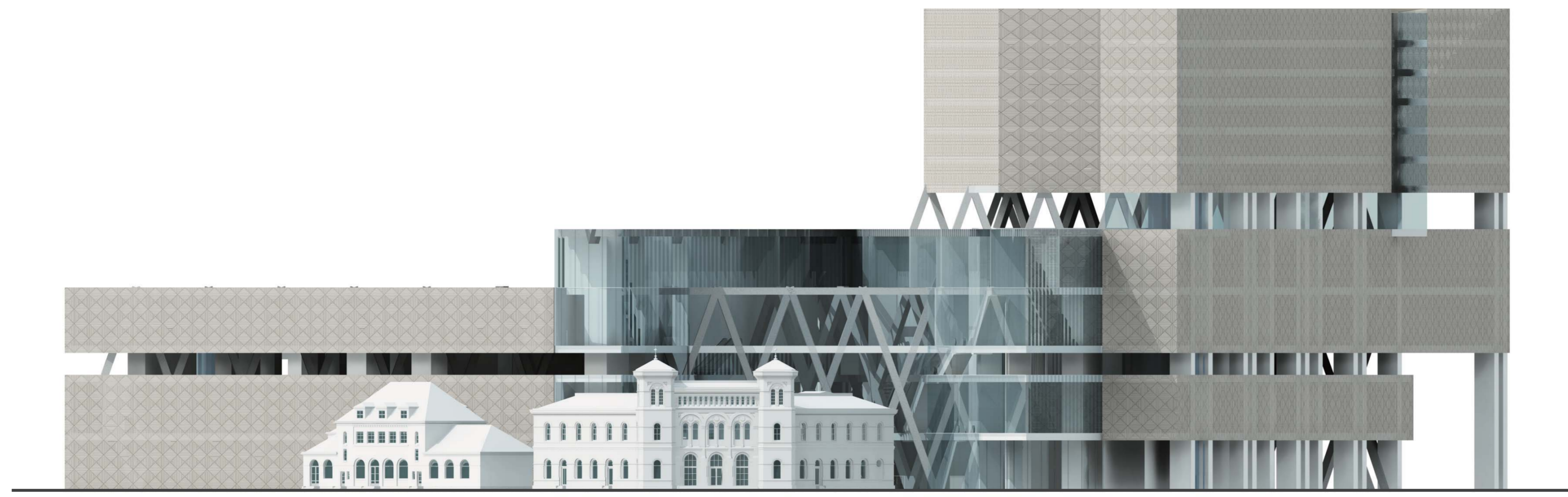
Floor planning

The building divides itself into blocks according to the flow of peripheral streets.

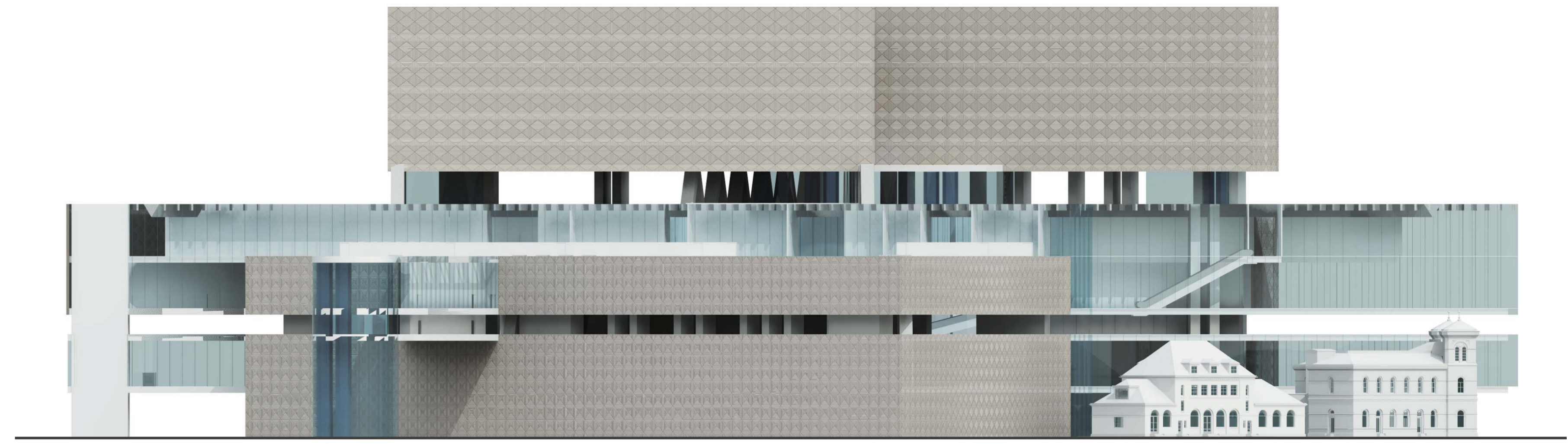
The east side is the place highly used by public in the site, and the sculpture garden in outdoor connected with Radhusplassen leads the visitors to the entrance and other public parts of the building. The Nobel Peace Center becomes an exhibition work here too, and comprises the open space towards Oslo fjord which, together with the museum, acts for the Norwegian culture.

The south side persuades to accept the flow of people from Aker Brygge over the road.

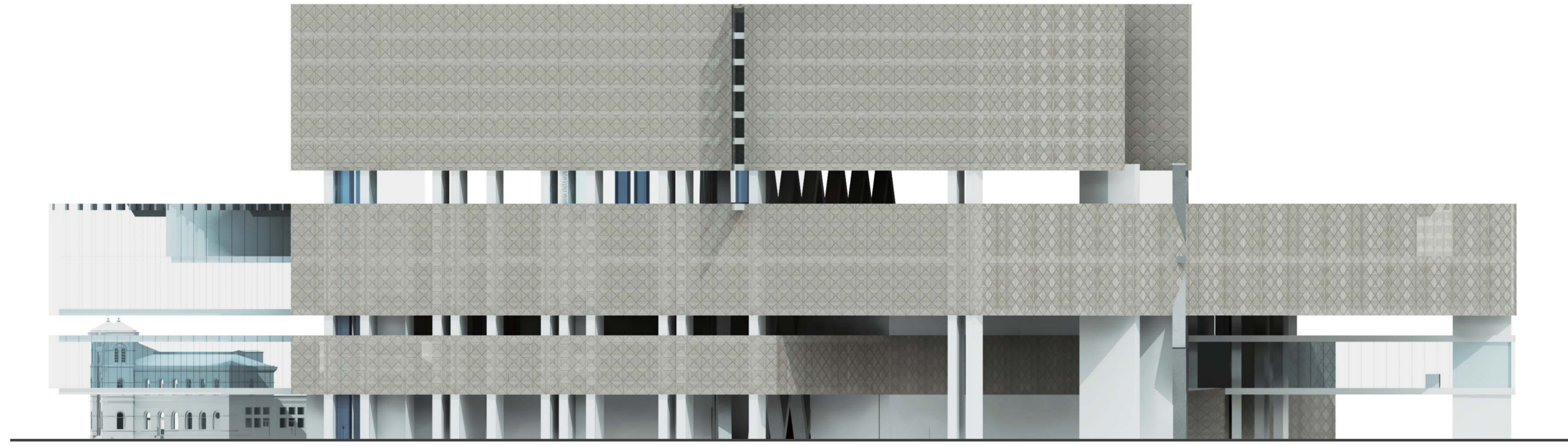
The west side and the north side are active places where it faces the surrounding buildings and motorways. To create a quiet space of the museum, it has simpler and harder structure. It contributes to the environment further without arranging the office in the part floor, and installing parking lots other than the service relation by using the public transportation facility in commuting.



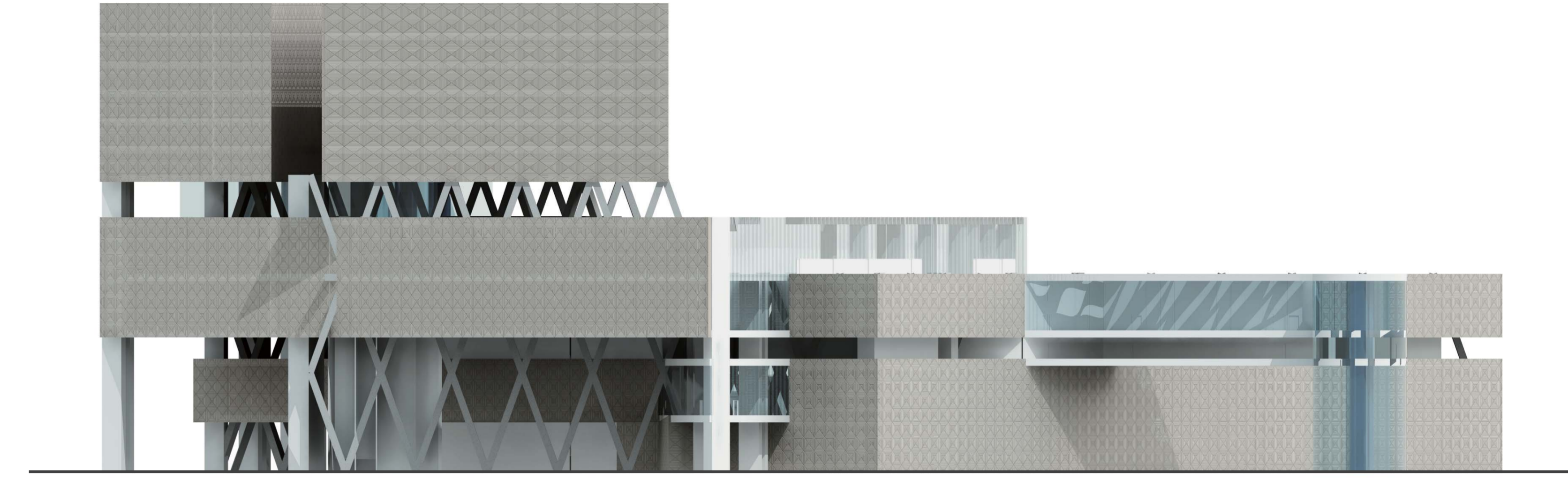
East Elevation 1/500



South Elevation 1/500



North Elevation 1/500

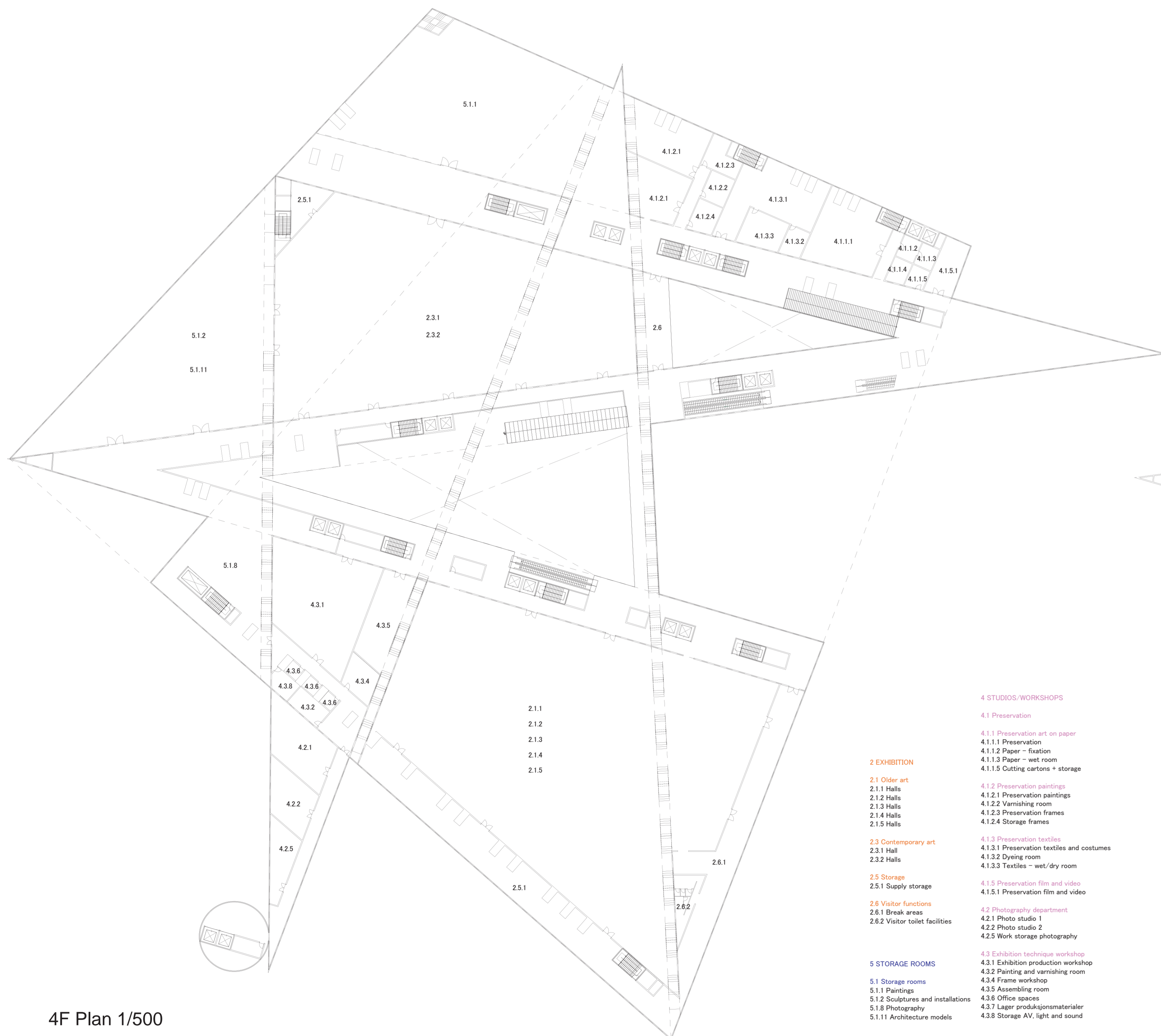


West Elevation 1/500

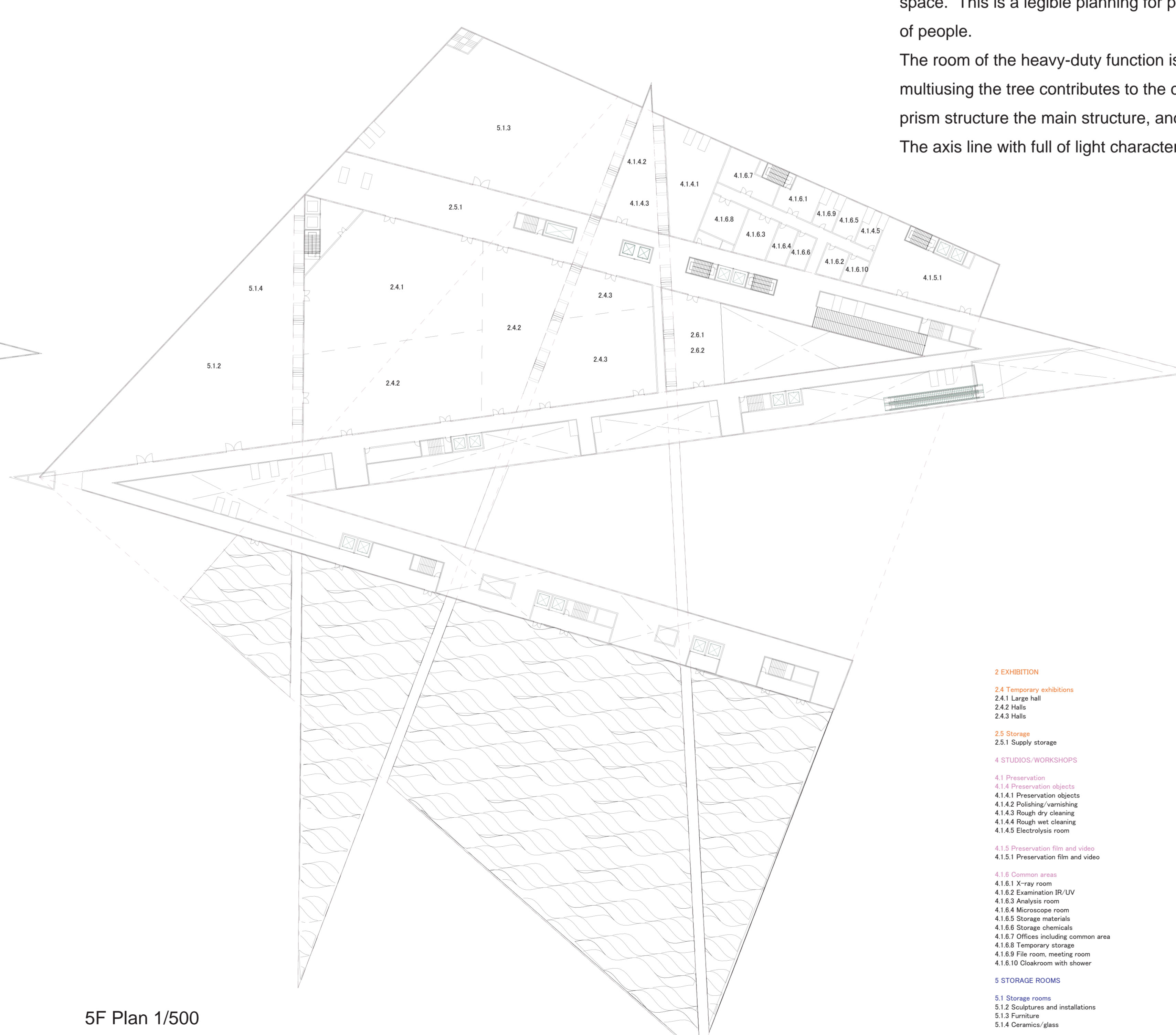
Within the museum, in addition to the lobby, the hall and the museum shop are located close to the entrance. Then universal linear transfer space leads to exhibition space, the workshop, the library, and the cafe. Alongside the street of the atrium, horizontal and vertical movement lines, WC, and other functionalities are aggregated, and arranged lucidly to separate museum functions from public space. This is a legible planning for people that plays a key role in disaster prevention and keeping high standard of health and safety of people.

The room of the heavy-duty function is not installed under the soil, and the risk is avoided as much as possible. This construction's multiusing the tree contributes to the control of the Co2 reduction of Norway very much. The structure makes a super-frame of the prism structure the main structure, and is composed with the core and the honeycomb floor.

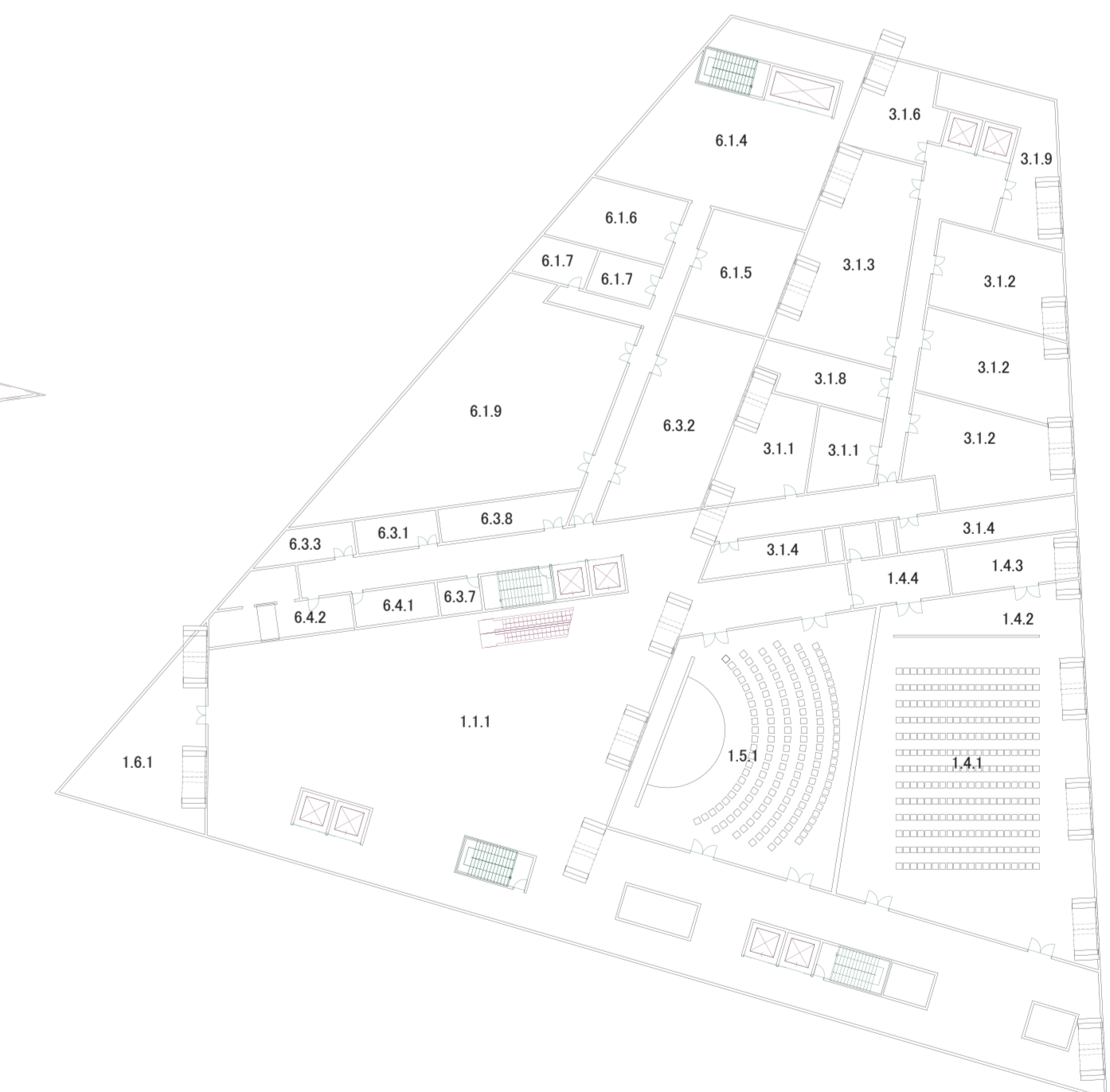
The axis line with full of light characterizes both the function and the design of the new building.



4F Plan 1/500



5F Plan 1/500



B1F Plan 1/500

- 1 VISITORS**
 - 1.1 Lobby/entrance
 - 1.1.1 Lobby/ meeting area
- 2 EXHIBITION**
 - 2.1 Exhibition space
 - 2.1.1 Exhibition hall
 - 2.1.2 Technical room
 - 2.1.3 Storage for chairs/ supplies
 - 2.1.4 Classroom/ toilet for artists
- 3 STORAGE**
 - 3.1 Media hall
- 4 MEETING ROOM**
 - 4.1 Meeting room
 - 4.1.1 Meeting/ group room
- 5 PRESENTATION, LIBRARY, DOCUMENTATION AND ART ON PAPER**
 - 5.1 Presentation
 - 5.1.1 Group rooms
 - 5.1.2 Studio
 - 5.1.3 Digital laboratory
 - 5.1.4 Exhibition room
 - 5.1.5 Classroom/ seminar/ classroom
 - 5.1.6 Workshop for teaching materials
 - 5.1.7 Storage for teaching materials
- 6 RECEPTION AND DISPATCH**
 - 6.1 Reception/ dispatch - art
 - 6.1.1 Packaging room
 - 6.1.2 Accreditation room
 - 6.1.3 Exhibition room
 - 6.1.4 Exhibition room
 - 6.1.5 Freezer room and acclimation after
 - 6.1.6 Box storage
- 7 MAINTENANCE**
 - 7.1 Office for head of operations
 - 7.2 Building maintenance
 - 7.3 Staff room operations
 - 7.4 Operations center
 - 7.5 Workshop maintenance
- 8 OFFICE ROOM OPERATIONS**
 - 8.1 Office room operations
 - 8.2 Staff room reception

Nasjonalmuseet for kunst, arkitektur og design_FEFF (Motto), PRISUM (BLDG. NAME)

Member list

Hirokazu Abe

abe@cmc.osaka-u.ac.jp

Cyber Media Center, Osaka University

5-1 Mihogaoka, Ibaraki, Osaka 567-0047

Japan

Masakazu Iwai

im.a-0821@aqua.plala.or.jp

5-20-6-208 Onohara-higashi, Minoh, Osaka

562-0031 Japan

Masahiko Miyamoto

mmyamoto@omcd.ac.jp

1-7-48 Abeno-ku Fuminosato, Osaka City

545-0004 Japan

Kensuke Yasufuku

yasufuku@cmc.osaka-u.ac.jp

Cyber Media Center, Osaka University

5-1 Mihogaoka, Ibaraki, Osaka 567-0047

Japan

Kaneyama Kuniaki

ks92sk@gmail.com

2-24-18 Ikuno-ku Nakagawanishi, Osaka City

544-0032 Japan

Noriko Otsuka

norikootsuka@btinternet.com

296 Hemdean Raod, Caversham, Reading, RG4

7QT, UK

Motoki Nishiyama

0846@omcd.ac.jp

1-7-48 Abeno-ku Fuminosato, Osaka City

545-0004 Japan

Ymamaga Marie

0835@omcd.ac.jp

1-7-48 Abeno-ku Fuminosato, Osaka City

545-0004 Japan

Akira Takahashi

takahashi_akira@arch.eng.osaka-u.ac.jp

Osaka University, Global Architecture

2-1 Yamadaoka, Suita, Osaka

567-0047 Japan

Takeomi Nakata

nakata_takeomi@arch.eng.osaka-u.ac.jp

Osaka University, Global Architecture

2-1 Yamadaoka, Suita, Osaka

567-0047 Japan

Akiko Hirano

aurum_425@yahoo.co.jp

Osaka University, Global Architecture

2-1 Yamadaoka, Suita, Osaka

567-0047 Japan

Hayato Sueshige

sueshige_hayato@arch.eng.osaka-u.ac.jp

Osaka University, Global Architecture

2-1 Yamadaoka, Suita, Osaka

567-0047 Japan

Junya Sugie
sugie_junya@arch.eng.osaka-u.ac.jp
Osaka University, Global Architecture
2-1 Yamadaoka, Suita, Osaka
567-0047 Japan

NA WOO CHUL
nowfe4651@yahoo.co.kr
Osaka University, Global Architecture
2-1 Yamadaoka, Suita, Osaka
567-0047 Japan

Toshiya Kashiwagi
kashiwagi_toshiya@arch.eng.osaka-u.ac.jp
Osaka University, Global Architecture
2-1 Yamadaoka, Suita, Osaka
567-0047 Japan

Yuya Deki
deki_yuya@arch.eng.osaka-u.ac.jp
Osaka University, Global Architecture
2-1 Yamadaoka, Suita, Osaka
567-0047 Japan

Mai Nakano
nakano_mai@arch.eng.osaka-u.ac.jp
Osaka University, Global Architecture
2-1 Yamadaoka, Suita, Osaka
567-0047 Japan

Tomoya Watanabe
watanabe_tomoya@arch.eng.osaka-u.ac.jp
Osaka University, Global Architecture
2-1 Yamadaoka, Suita, Osaka
567-0047 Japan

Yuta Nagai
nagai_yuta@arch.eng.osaka-u.ac.jp
Osaka University, Global Architecture
2-1 Yamadaoka, Suita, Osaka
567-0047 Japan